



M.V. OFFSHORE UNITY

IMO 9443982 - LABROY 63M ANCHOR HANDLING TOWING SUPPLY VESSEL



REGISTRATION

Owner:	Raj Shipping Agencies Ltd.
Year Built:	2009, Indonesia
Builder:	Labroy Shipbuilding & Eng
Flag:	India
IMO No.:	9443982
Hull Number:	T 174
Call Sign:	ATCP2
Home Port:	Mumbai
Tonnage (ITC):	1815 GT / 544 NT
Class	ABS: +A1, FFV-1 (E), +AMS, +ACCU, +DPS-2,
Notations:	TOWING VESSEL, OSV

MAIN CHARACTERISTICS

LOA:	206.7 ft (63 m)
Beam:	49.2 ft (15 m)
Depth:	20 ft (6.1 m)
Maximum Draft:	17.1 ft (5.2 m)
Minimum Height:	75.1 ft (22.9 m)
Freeboard:	3 ft (0.9 m)
Displacement:	3,290 lt (3,340 mt)
Deadweight:	1,600 lt (1,630 mt)
Clear Deck Space:	100 x 40 ft (31 x 12 m)
Clear Deck Area:	3,980 ft ² (370 m ²)
Deck Strength AFT:	1,540 lb/ft ² (7.5 t/m ²)

PERFORMANCE

Maximum:	24.5 m ³ /day (270 gph) @ 13.5 knots
Cruising:	10.5 m ³ /day (120 gph) @ 10 knots
Economical:	7.6 m ³ /day (85.7 gph) @ 8 knots
Standby:	1.9 m ³ /day (21 gph) @ 0 knots
Range @ 10 Knots:	13,000 nm
Bollard Pull:	92.6 st (84 mt)

CARGO CAPACITY

Deck Cargo:	590 lt (600 t)
--------------------	----------------

MACHINERY

Main Engines (2):	MAK 8M 25 Total HP: 7,080
Propellers (2):	2.8 m DIA CPP 4 BLADE
Gears (2):	ULSTEIN 600 AGHC-KP500ND 3.87:1
Kort Nozzles:	2
Rudders (2):	HIGH-LIFT FLAP TYPE
Primary Generators (2):	370 kw, 440 v, 60 hz Driven by: CAT 3408
Secondary Generators (2):	1,200 kw, 440 v, 60 hz Driven by: MAIN ENGINES
Emergency Generators (1):	94 kw, 440 v, 60 hz Driven by: CAT C4.4
Bow Thruster (2):	KAWASAKI KT-55B3 TUNNEL 400 KW ELECTRIC MOTOR Total Thrust: 13.5 st (12.2 mt)
Stern Thruster (1):	KAWASAKI KT-55B3 TUNNEL 400 KW ELECTRIC MOTOR Total Thrust: 6.7 st (6.1 mt)

TOW/ANCHOR HANDLING

Winch:	RR - BRATTVAAG (250T BRAKE) Model: SL 200WX-B2T Line Pull: 200 mt
Tow/AH Wire:	1,400 m / 1,400 m of 58 mm
Pennant Reels (1):	1,500 m of 58 mm
Shark Jaw:	KARM FORK 200 MT SWL
Tow Pins:	KARMOY 200 MT SWL
Chain Handler:	1 x 76MM, 1 x 81MM
Stern Roller:	RR - 16.4FT x 6FT DIA, 200 mt SWL

COMMUNICATION & NAVIGATION EQUIPMENT

Radar(s):	2
Depth Sounder:	1
Gyro Compass:	2
Wind Speed Indicators:	2
Doppler Log:	1
Radio:	2 x VHF, 1 x SSB



M.V. OFFSHORE UNITY

IMO 9443982 - LABROY 63M ANCHOR HANDLING TOWING SUPPLY VESSEL



Fuel Oil:	150,000 gal (570 m ³)
Potable Water:	45,400 gal (170 m ³)
Fresh Water:	74,600 gal (280 m ³)
Drill/Ballast Water:	108,000 gal (410 m ³)
Bulk Tanks (4 tanks):	6,000 ft ³ (170 m ³)
Liquid Mud (2.5 SG*):	2,570 bbl (410 m ³)
Oil Dispersant:	3,570 gal (13.5 m ³)
Fire Fighting Foam:	2,150 gal (8.1 m ³)

Sat Com: INMARSAT-C

SPECIAL EQUIPMENT

Fire Fighting:	FiFi-1
Dynamic Positioning:	DP-2
Ref. Systems:	2 x MRU, 2 x DGPS 1 x Laser-based
Water Maker:	1X10 T/DAY
Mud Circulation System:	Yes
Rescue Zone:	Yes
Rescue Boat:	6 MAN MOB
Reefer Sockets:	4x 440V 32A
Misc:	1xAIS, MSD - 40 Persons

TRANSFER RATES

Fuel Oil:	550 gpm @ 250 ft (120 m ³ /h @ 75 m)
Fresh Water:	550 gpm @ 250 ft (120 m ³ /h @ 75 m)
Drill/Ballast Water:	550 gpm @ 250 ft (120 m ³ /h @ 75 m)
Bulk:	25 cfm @ 190 ft (42.4 m ³ /h @ 57 m)
Liquid Mud:	440 gpm @ 260 ft (100 m ³ /h @ 80 m)

ACCOMMODATION

No. of Berths:	32
Cabins:	4x1-man, 6x2-man & 4x4-man
Certified to Carry:	32
Galley seating:	24
Hospital:	Yes



DECK EQUIPMENT

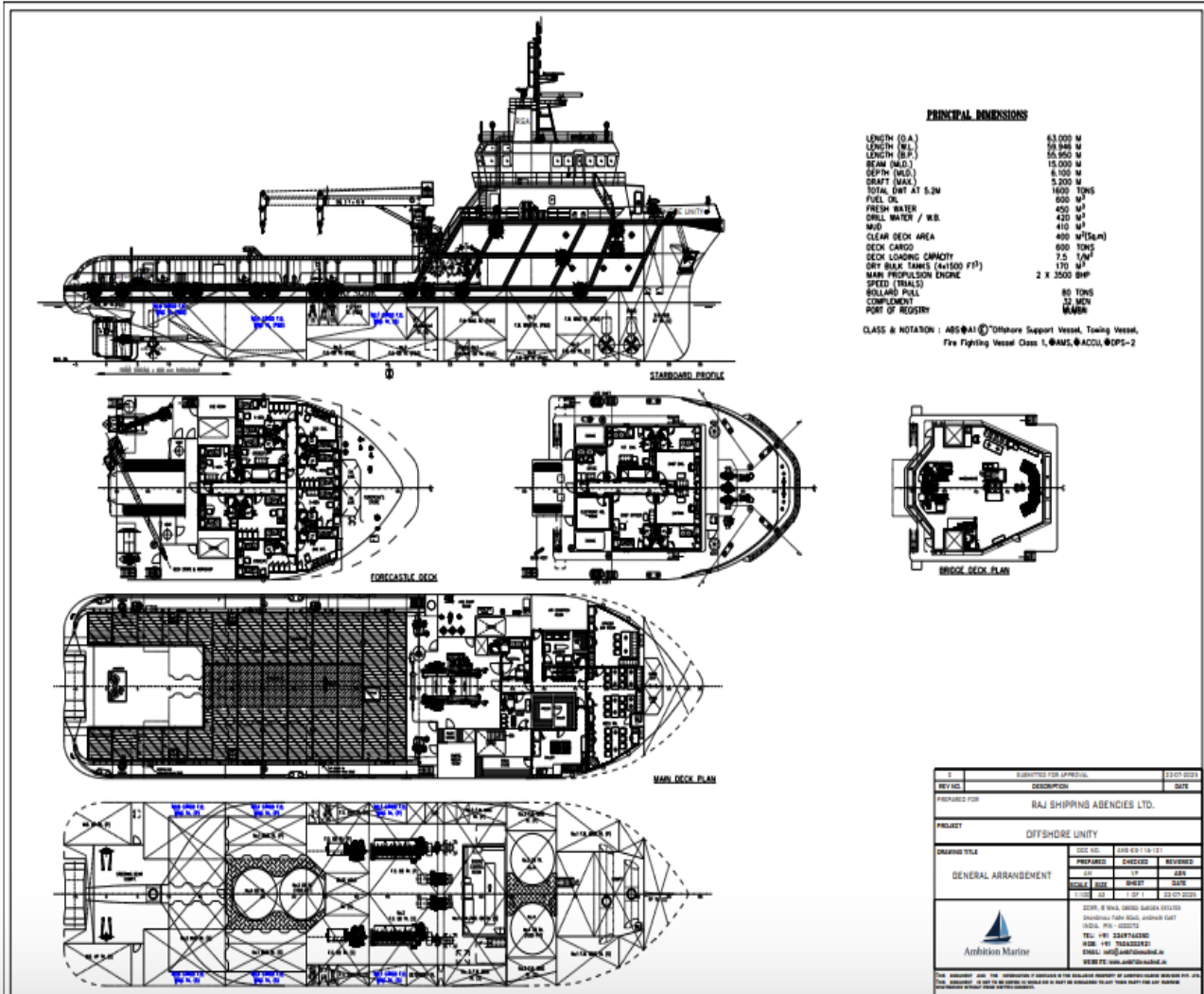
Anchors (2):	3,836 lbs HHP
Anchor Chain:	410 m of 38 mm chain per side
Windlass:	RR - BRATTVAAG 8 MT HM/MIN
Crane (1):	3 t @ 15 m
Capstans (2):	5.2 t RR - BRATTVAAG (19m/min)
Tugger (2):	12 t RR - BRATTVAAG (24M/MIN)

ADDITIONAL NOTES / REMARKS

Labroy 63M Anchor Handling Towing Supply Vessel (AHTS) with DP-2 classification and FiFi-1 firefighting capability. Bollard pull 92.6 st (84 mt). Equipped with comprehensive tow/anchor handling equipment including RR-Brattvaag 250T brake winch, Karm Fork 200 MT SWL shark jaw, and stern roller. Advanced dynamic positioning with dual MRU and DGPS systems plus laser-based reference.

M.V. OFFSHORE UNITY

IMO 9443982 - LABROY 63M ANCHOR HANDLING TOWING SUPPLY VESSEL



SUBMITTED FOR APPROVAL		23.07.2023
REV NO.	DESCRIPTION	DATE
PREPARED FOR: RAJ SHIPPING AGENCIES LTD.		
PROJECT: OFFSHORE UNITY		
DRAWING TITLE: GENERAL ARRANGEMENT		
DESIGN NO.	DATE: 18-11	
PREPARED	CHECKED	REVIEWED
BY	BY	BY
SCALE	SHEET	SHEET
1:100	1 OF 1	23.07.2023
NOTE: IF WALL, BRIDGE GARDIA DETAILS, STRUCTURAL FABRICATION AND/OR EIGHT DETAILS, PIPING, ETC.		
TEL: +91 228743620		
FAX: +91 228743620		
EMAIL: info@ambitionmarine.in		
WEBSITE: www.ambitionmarine.in		

Particulars given here are believed to be correct but not guaranteed. Owners reserve the rights to amend the specifications without notification.